



# ESACOTE<sup>®</sup> AC 202

Water based self crosslinkig binder with excellent chemical resistance



# DISCLAIMER

While we believe that the information contained herein is accurate and reliable, it is presented without any guarantee or responsibility of any kind and does not constitute any representation or warranty of Lamberti SpA, either expressed or implied. Various factors may influence the performance of water based binders and chemical additives, including other materials used, formulation, and processing conditions, all of which must be considered by the user in producing or using the products. The user should not assume that the data indicated herein are exhaustive or complete or that no other measures may be necessary. The information provided herein does not relieve the user from the responsibility of conducting their own tests and experiments, and the user assumes all risks and liabilities (including, but not limited to, risks related to results, patent infringement, regulatory compliance, and health, safety, and environment) associated with the use of the products and/or information contained herein.

# ESACOTE® AC 202



- Anionic self X-linking PAC
- High gloss and clarity
- Quick drying
- Good sandability
- Excellent chemical resistance
- Excellent adhesion on wood and melamine



- Suitable for sealers, primers and top coats
- Suitable for spray, brush and roller applications
- Suitable for DIY, professional and OEM applications

## Typical values

<b>Appearance at 25 °C:</b>	milky liquid
<b>pH:</b> (at 25°C on supplied product, ASTM E 70):	7,0-8,0
<b>Viscosity (mPa.s):</b> (Brookfield RVT @ 25 °C, 20 rpm spindle 2)	< 500
<b>Solid content, %:</b>	42.0-44.0

## Product properties

<b>Solvent content, %:</b>	0%
<b>Minimal film forming temperature, °C:</b>	~50
<b>Density @ 25°C, g/ml</b>	~1.05
<b>Koenig hardness (sec):</b>	~85
<b>Film aspect:</b>	transparent and glossy



# TRANSPARENT 1K SEALER

		Trade name	% w/w
<b>A1</b>	Binder	<b>ESACOTE® AC 202</b>	77.0
<b>B1</b>	Coalescent (DOW)	BUTYL CARBITOL	6.0
<b>B2</b>	Demi water	WATER	6.3
<b>C1</b>	Wetting agent	<b>BAMAX 104 PG</b>	0.5
<b>D1</b>	Sanding agent	<b>LAMKOTE RO</b>	3.7
<b>E1</b>	Defoamer (BYK)	BYK 028	0.5
<b>G1</b>	Rheology modifier	<b>VISCOLAM® PS 170 AIR</b> (20% diluted)	6.0
<b>Total</b>			100.0

Solid Content ≈ 33%

Brookfield Vx RVT 50 rpm spindle 3 20 °C = 850 cps





# 1K GLOSSY TOP COAT

		Trade name	% w/w
<b>A1</b>	Binder	<b>ESACOTE® AC 202</b>	80.0
<b>B1</b>	Defoamer (BYK)	BYK 349	0.5
<b>C1</b>	Defoamer (BYK)	BYK 028	0.5
<b>D1</b>	Coalescent (DOW)	BUTYL CARBITOL	6.0
<b>E1</b>	Demi water	WATER	11.25
<b>F1</b>	Surface additive (BYK)	BYK 333	0.25
<b>G1</b>	Rheology modifier	<b>VISCOLAM® PS 170 AIR</b> (20% diluted)	1.2
<b>H1</b>	Defoamer (BYK)	BYK 024	0.3
<b>Total</b>			100.0

Solid Content ≈ 34%

Brookfield viscosity 20°C ≈ 2000 - 2300 cps

Formulation	Gloss (60°)	Pencil Hardness
F10W11-2021 1K	87	HB

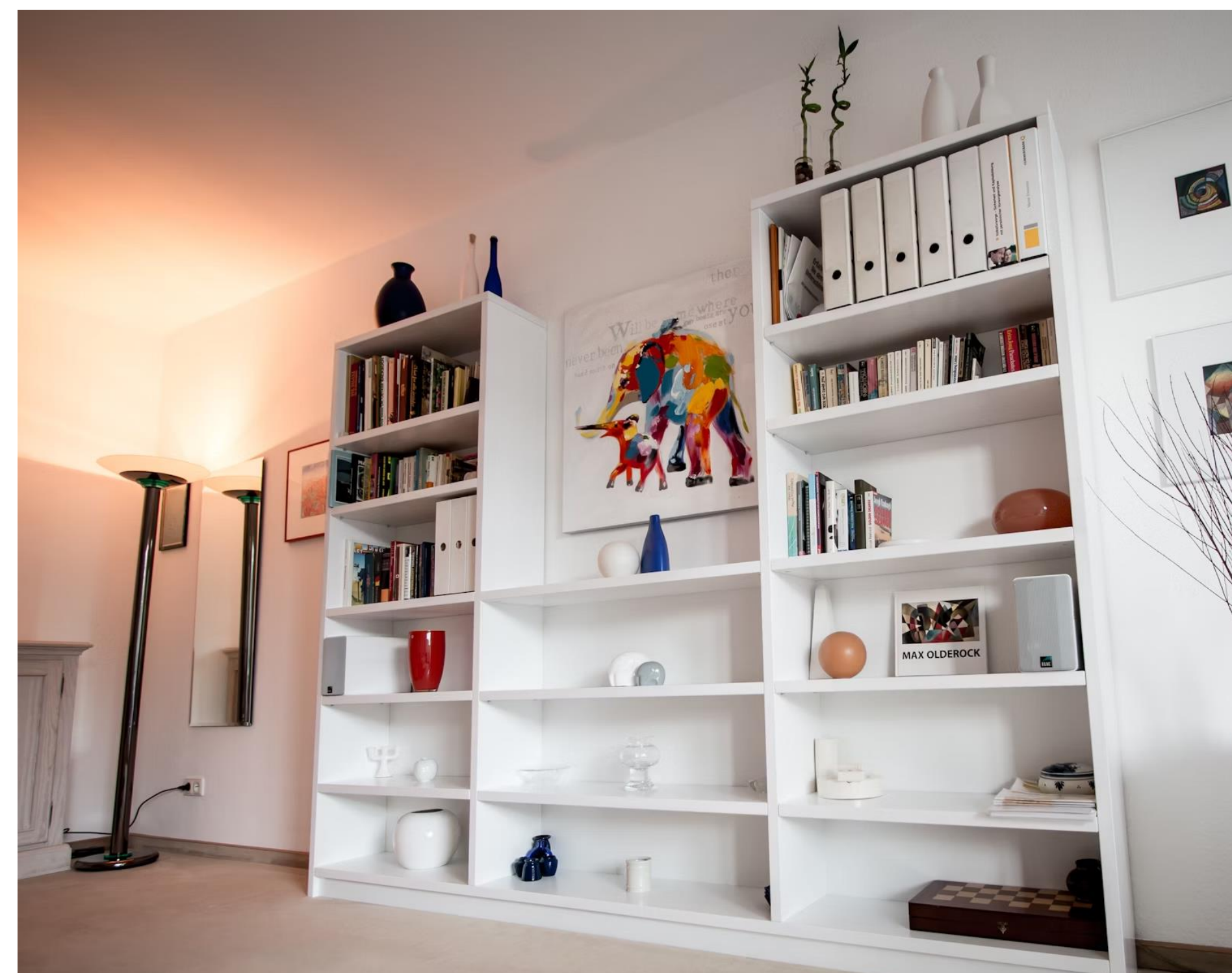
## Chemical and stain resistance EN 12720 - 1K

Formulation	NH <sub>3</sub> 10% - 1 h	Ethanol 48% - 1 h	Acetic Acid 10% - 1 h	Ketchup 1h	Coffee (40g/L) 1h	Mustard 1h	Shoe polish 1 h
F10W11-2021 1K	4	3	5	5	5	5	5

Formulation	MEK 10 min	Acetone 10 min	Paraffin oil 1h	Olive oil 1h	Water 1h	Water 8h	Water 16h
F10W11-2021 1K	3	3	5	5	5	4	2

# 2K GLOSSY TOP COAT

		Trade name	% w/w
<b>A1</b>	Binder	<b>ESACOTE® AC 202</b>	80.0
<b>B1</b>	Defoamer (BYK)	BYK 349	0.5
<b>C1</b>	Defoamer (BYK)	BYK 028	0.5
<b>D1</b>	Coalescent (DOW)	BUTYL CARBITOL	6.0
<b>E1</b>	Demi water	WATER	11.25
<b>F1</b>	Surface additive (BYK)	BYK 333	0.25
<b>G1</b>	Rheology modifier	<b>VISCOLAM® PS 170 AIR</b> (20% diluted)	1.2
<b>H1</b>	Defoamer (BYK)	BYK 024	0.3
<b>I1</b>	Isocyanic crosslinker	<b>CROSSLINKER 08 LM</b>	10
<b>Total</b>			110.0



Solid Content ≈ 37.5%

Chemical and stain resistance EN 12720 - 2K							
Formula	NH <sub>3</sub> 10% - 1h	Ethanol 48% - 1h	Acetic Acid 10% 1h	Ketchup 1h	Coffee (40g/L) 1h	Mustard 1h	Shoe polish 1h
F10W11-2021 2K	4	4	5	5	5	5	5

Formula	MEK 10 min	Acetone 10 min	Paraffin oil 1h	Olive oil 1h	Water 1h	Water 8h	Water 16h
F10W11-2021 2K	3	3	5	5	5	4	3



# 1K MATT TOP COAT

		Trade name	% w/w
<b>A1</b>	Binder	<b>ESACOTE® AC 202</b>	76.0
<b>B1</b>	Defoamer (BYK)	BYK 349	0.5
<b>C1</b>	Wax dispersion	<b>ADIWAX H05CW</b>	3.0
<b>D1</b>	Micronized wax (BYK)	CERAFLUOR 929N	0.5
<b>E1</b>	Matting silica (Evonik)	ACEMATT TS 100	2.0
<b>F1</b>	Defoamer (BYK)	BYK 028	0.5
<b>G1</b>	Coalescent (DOW)	BUTYL DIGLYCOL	6.0
<b>H1</b>	Demi water	WATER	5.5
<b>I1</b>	Rheology modifier	<b>VISCOLAM® PS 170 AIR</b> (20% diluted)	6.0
<b>Total</b>			100.0

Solid Content ≈ 36%

Brookfield viscosity 20°C ≈ 800 – 900 cps

Formula	Gloss (60°)	Pencil Hardness
F10W11-2021 1K	20	HB

## Chemical and stain resistance EN 12720 - 1K

Formula	NH <sub>3</sub> 10% - 1h	Ethanol 48% - 1h	Acetic Acid 10% 1h	Ketchup 1h	Coffee (40g/L) 1h	Mustard 1h	Shoe polish 1h
F2W11-2021 1K	4	3	5	5	5	5	5

Formula	MEK 10 min	Acetone 10 min	Paraffin oil 1h	Olive oil 1h	Water 1h	Water 8h	Water 16h
F2W11-2021 1K	4	4	5	5	5	1	1



# 2K MATT TOP COAT

		Trade name	% w/w
<b>A1</b>	Binder	<b>ESACOTE® AC 202</b>	76.0
<b>B1</b>	Defoamer (BYK)	BYK 349	0.5
<b>C1</b>	Wax dispersion	<b>ADIWAX H05CW</b>	3.0
<b>D1</b>	Micronized wax (BYK)	CERAFLUOR 929N	0.5
<b>E1</b>	Matting silica (Evonik)	ACEMATT TS 100	2.0
<b>F1</b>	Defoamer (BYK)	BYK 028	0.5
<b>G1</b>	Coalescent (DOW)	BUTYL DIGLYCOL	6.0
<b>H1</b>	Demi water	WATER	5.5
<b>I1</b>	Rheology modifier	<b>VISCOLAM® PS 170 AIR</b> (20% diluted)	6.0
<b>J1</b>	Isocyanic crosslinker	<b>CROSSLINKER 08 LM</b>	10
<b>Total</b>			110.0

Solid Content ≈ 39%

Formula	Gloss (60°)
F2W11-2021 2K	20

## Chemical and stain resistance EN 12720 - 2K

Formula	NH <sub>3</sub> 10% - 1h	Ethanol 48% - 1h	Acetic Acid 10% 1h	Ketchup 1h	Coffee (40g/L) 1h	Mustard 1h	Shoe polish 1h
F2W11-2021 2K	5	4	5	5	5	5	5

Formula	MEK 10 min	Aceton 10 min	Paraffin oil 1h	Olive oil 1h	Water 1h	Water 8h	Water 16h
F2W11-2021 2K	4	4	5	5	5	4	4



# 1K MATT ANTI SCRATCH TOP COAT

		Trade name	% w/w
<b>A1</b>	Binder	<b>ESACOTE® AC 202</b>	70.0
<b>B1</b>	Microbeads	<b>DECOSPHAERA® 8-20</b>	10.0
<b>C1</b>	Wax dispersion	<b>ADIWAX H30F</b>	3.0
<b>D1</b>	Coalescent (DOW)	BUTYL DIGLYCOL	5.0
<b>E1</b>	Demi water	WATER	6.8
<b>F1</b>	Wetting agent (BYK)	BYK 349	0.5
<b>G1</b>	Slip/mar agent (DOW)	DOWSIL 56 (50% diluted)	0.5
<b>H1</b>	Surface active (BYK)	BYK 342	0.2
<b>I1</b>	Defoamer (BYK)	BYK 1724	0.5
<b>J1</b>	Defoamer (BYK)	BYK 028	0.5
<b>K1</b>	Rheology modifier	<b>VISCOLAM® PS 170 AIR</b> (20% diluted)	3.0
<b>Total</b>			100.0

Solid Content ≈ 43%

Brookfield viscosity - 10 rpm - Spindle 2 - 20°C ≈ 800 cps

Gloss	20°	60°	85°
F15W09-2023 1K	1.4	10	20

## Chemical and stain resistance EN 12720 - 1K

Formula	NH <sub>3</sub> 10% - 1h	Ethanol 48% - 1h	Acetic Acid 10% 1h	Ketchup 1h	Coffee (40g/L) 1h	Mustard 1h	Shoe polish 1h
F2W11-2021 1K	5	3	4	5	5	4	2

Formula	MEK 10 min	Nivea cream 1h	Sun cream 1h	Olive oil 1h	Betadine 1h	Water 6h	Water 16h
F2W11-2021 1K	3-4	5	5	5	2	5	5

# 1K MATT TOP COAT

		Trade name	% w/w
<b>A1</b>	Binder	<b>ESACOTE® AC 202</b>	52.0
<b>B1</b>	Inherently matt binder	<b>ESACOTE® PU 980</b>	8.0
<b>C1</b>	Wetting agent (Munzing)	EDAPLAN 451	0.5
<b>D1</b>	Defoamer(BYK)	BYK 028	0.5
<b>E1</b>	Slip/mar agent (DOW)	DOWSIL 51	0.25
<b>F1</b>	Demi water	WATER	0.25
<b>G1</b>	Microbeads	<b>DECOSPHAERA® 8-20</b>	10.0
<b>H1</b>	Demi water	WATER	8.8
<b>I1</b>	Wax dispersion	<b>ADIWAX H 05CW</b>	3.0
<b>J1</b>	Defoamer (BYK)	BYK 1724	0.5
<b>K1</b>	Wetting agent (BYK)	BYK 342	0.2
<b>L1</b>	Coalescent (DOW)	BUTYL DIGLYCOL	6.0
<b>M1</b>	Demi water	WATER	6.0
<b>N1</b>	Rheology modifier	<b>VISCOLAM® PS 170 AIR</b> (20% diluted)	3.0
<b>O1</b>	Rheology modifier	<b>VISCOLAM® PS 202 AIR</b>	1.0
<b>Total</b>			100.0

Solid Content ≈ 35%

Brookfield viscosity 10 rpm - Spindle 2 - 20°C ≈ 1480 cps





# 1K MATT TOP COAT

Formulation	Gloss (60°)	Pencil Hardness
F15W6-2022 1K	6	HB

Chemical and stain resistance EN 12720 - 1K							
Formula	NH <sub>3</sub> 10% - 1h	Ethanol 48% - 1h	Acetic Acid 10% 1h	Ketchup 1h	Coffee (40g/L) 1h	Coffee (20g/L) 6h	Coffee (20g/L) 16h
F15W6-2022 1K	4	3	4	5	5	3-4	3-4

Formula	MEK 10 min	Aceton 10 min	Mustard 1h	Shoe polish 1h	Water 1h	Water 6h	Water 16h
F15W6-2022 1K	3	3	5	4	3-4	2	2



# 2K MATT TOP COAT

		Trade name	% w/w
<b>A1</b>	Binder	<b>ESACOTE® AC 202</b>	52.0
<b>B1</b>	Inherently matt binder	<b>ESACOTE® PU 980</b>	8.0
<b>C1</b>	Wetting agent (Munzing)	EDAPLAN 451	0.5
<b>D1</b>	Defoamer(BYK)	BYK 028	0.5
<b>E1</b>	Slip/mar agent (DOW)	DOWSIL 51	0.25
<b>F1</b>	Demi water	WATER	0.25
<b>G1</b>	Microbeads	<b>DECOSPHAERA® 8-20</b>	10.0
<b>H1</b>	Demi water	WATER	8.8
<b>I1</b>	Wax dispersion	<b>ADIWAX H 05CW</b>	3.0
<b>J1</b>	Defoamer (BYK)	BYK 1724	0.5
<b>K1</b>	Wetting agent (BYK)	BYK 342	0.2
<b>L1</b>	Coalescent (DOW)	BUTYL DIGLYCOL	6.0
<b>M1</b>	Demi water	WATER	6.0
<b>N1</b>	Rheology modifier	<b>VISCOLAM® PS 170 AIR</b> (20% diluted)	3.0
<b>O1</b>	Rheology modifier	<b>VISCOLAM® PS 202 AIR</b>	1.0
<b>P1</b>	Isocyanic crosslinker	<b>CROSSLINKER 08 LM</b>	10
<b>Total</b>			110.0

Solid Content ≈ 35%

Brookfiled viscosity 10 rpm – Spindle 2 - 20°C ≈ 1480 cps





# 2K MATT TOP COAT

Formulation	Gloss (60°)	Pencil Hardness
F15W6-2022 2K	7	F-H

Chemical and stain resistance EN 12720 - 2K							
Formula	NH <sub>3</sub> 10% - 1h	Ethanol 48% - 1h	Acetic Acid 10% 1h	Ketchup 1h	Coffee (40g/L) 1h	Coffee (20g/L) 6h	Coffee (20g/L) 16h
F15W6-2022 2K	4	3	4	5	5	4	4

Formula	MEK 10 min	Aceton 10 min	Mustard 1h	Shoe polish 1h	Water 1h	Water 6h	Water 16h
F15W6-2022 2K	3-4	3-4	4	4	5	5	5



